

## Lock Down Machine Vices



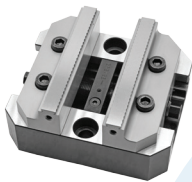
| Jaw Width      | Max Open | Jaw Height | Weight |
|----------------|----------|------------|--------|
| 6"             | 160MM    | 45         | 34KG   |
| 6"             | 200MM    | 50         | 46KG   |
| 6" Swivel Base | 160MM    | 45         | 37KG   |
| 6" Swivel Base | 200MM    | 50         | 51KG   |

## Hydraulic Vice



| Jaw Width | Opening | H  | Max Clamp Force | Weight |
|-----------|---------|----|-----------------|--------|
| 6"        | 200MM   | 48 | 4500 KGF        | 45KG   |
| 6"        | 300MM   | 52 | 4500 KGF        | 60KG   |

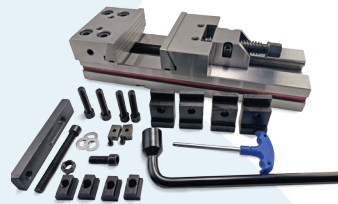
## Precision Self Centring 5 Axis Vice



| JAW WIDTH | Length | OPENING | CLAMPING FORCE |
|-----------|--------|---------|----------------|
| 75        | 100    | 40      | 2500 kg        |
| 75        | 150    | 70      | 2500 kg        |
| 126       | 126    | 60      | 2500 kg        |

**Feature:**  
ACCURACY: 0.01 /100 MM, ALLOY STEEL, CLAMP PRESSURE 4,000 KG

## Precision Modular Vice



| JAW WIDTH | OPENING | H  | MAX CLAMP FORCE | WEIGHT |
|-----------|---------|----|-----------------|--------|
| 150 MM    | 200 MM  | 50 | 3500 kg         | 30 kg  |
| 150 MM    | 300 MM  | 50 | 3500 kg         | 35 kg  |

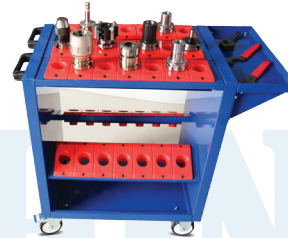
**Feature:** ACCURACY: 0.02 MM, HARDNESS: 60 HRC, ALLOY STEEL, SERRATED JAWS, MAX CLAMP PRESSURE: 3,500 KG

## Clamping Kits



| Model | Table Slot | Stud Sizes | Kit Includes         |
|-------|------------|------------|----------------------|
| M10   | 12         | 10-1.5P    | 24 PC: STUDS         |
| M12   | 14         | 12-1.75P   | 6 PC :T-NUTS         |
| M14   | 16         | 14-2.0P    | 4 PC : COUPLING NUTS |
| M16   | 18         | 16-2.0P    | 6 PC : FLANGE NUTS   |
| M18   | 20         | 18-2.5P    | 6 PC : STEP CLAMPS   |
| M20   | 22         | 20-2.5P    | 12PC : STEP BLOCKS   |

## CNC Tooling Trolleys

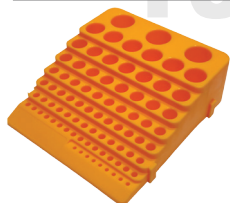


| MODEL  | SLOTS    |
|--------|----------|
| BT40   | 35 SLOTS |
| BT50   | 25 SLOTS |
| HSK-63 | 25 SLOTS |



Spare Cups

## Tool Holder Tray



Suitable to hold Endmills / Drills / Collets, etc.

| Model    |                 |
|----------|-----------------|
| 62 holes | DIA : 6 - 42 MM |

## CNC SPINDLE CLEANER

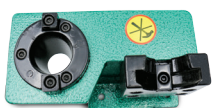


CNC Spindle Cleaner  
BT 30 / BT 40 / BT 50



CNC Spindle Cleaner  
HSK 63 / HSK 100

## Tool Holder (Locking) Device



BT Series



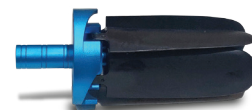
HSK Series



Universal Type  
Extra heavy duty

| MODEL  |
|--|
| BT-30 / 40 / 50                                  |
| HSK - 50 / 63 / 100                              |
| UNIVERSAL TYPE<br>(BT, SK, CAT, NT - 40, HSK 63) |

## CNC Scrap Cleaner Fan



Works as a fan to dust off burrs from the machine bed within seconds