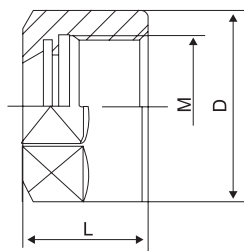
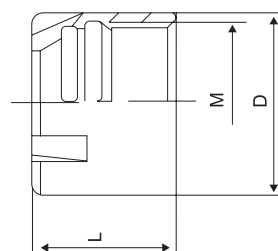


A Type (HEX) Nuts



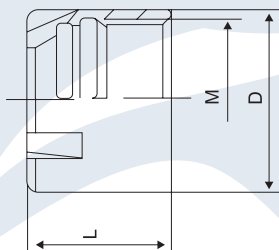
MODEL	L	D	M
ER8A	11	14	
ER11A	11.3	19	M14 X 0.75P
ER16A	17.5	28	M22 X 1.5P
ER20A	19	34	M25 X 1.5P

ER – UM Nuts



MODEL	L	D	M
ER25UM	20	42	M32 X 1.5P
ER32UM	22.5	50	M40 X 1.5P
ER40UM	25.5	63	M50 X 1.5P

ER – M Nuts



MODEL	L	D	M
ER8M	10	12	10 X 0.75P
ER11M	12	16	M13 X 0.75P
ER16M	18	22	M19 X 1.0P
ER20M	19	28	M24 X 1.0P

ER (M) – Spanners



Model of Spanners	Type of nuts
ER8M	ER8M
ER11M	ER11M
ER16M	ER16M
ER20M	ER20M

ER (A / Hex) – Spanners



Model of Spanners	Type of nuts
ER8A	ER8A
ER11A	ER11A
ER16A	ER16A
ER20A	ER20A

C – Spanners For Keyless Chucks



Model of Spanners	Type of Chuck
C-ER25	1/2" Light
C-ER32	1/2" Heavy
C-ER40	5/8", 3/4", Heavy
APU-13	APU-13

ER (UM) – Spanners



Model of Spanners	Type of nuts
ER25	ER25UM
ER32	ER32UM
ER40	ER40UM