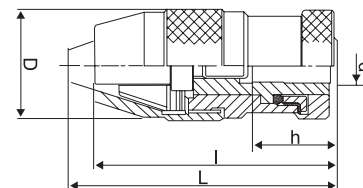


Key Type Drill Chuck



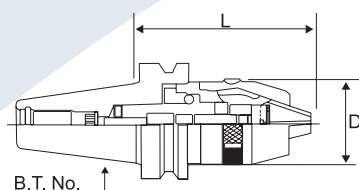
Size	Range	Taper
1/2" (13MM)	1-13MM	JT-6
3/4" (20MM)	3-20MM	JT-3

Keyless Drill Chuck



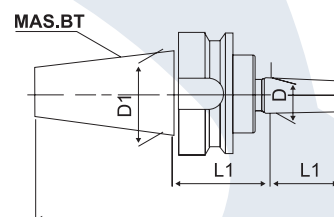
Model	Capacity	Taper	d	h	D	L	l
1/4" / 6MM	0.5-6MM	JT1	10	14.5	35	67	61
3/8" / 10MM	1-10MM	JT2	12	18.5	42	86	78
1/2" / 13MM LIGHT	1-13MM	JT6	17.17	21	44	86	76
1/2" / 13MM HEAVY	1-13MM	JT6	17.17	24	48	97	88
5/8" / 16MM	3-16MM	JT3	20.599	24	52	108	98
3/4" / 20MM	3-20MM	JT3	20.599	30.5	62	128	118

Integrated Keyless Drill Chuck



MODEL	Clamping range	D	L	
			Min	Max
BT30 - APU13	1-13MM	51.5	94	105
BT40 - APU13	1-13MM	51.5	98	109
BT40 - APU16	1-16MM	58	115	130
BT50 - APU13	1-13MM	51.5	98	109
BT50 - APU16	1-16MM	58	115	130

BT Drill Chuck Adaptor



MODEL	L2	L	D	D1	M
BT40-JT6	22.225	132.6	14.199	44.45	M16